



SERVICE BULLETIN

INSTALLATION / REMOVAL- IEW END WALL COVER PANEL

1. Cover Panel Removal

Step 1 – Obtain and Inspect Suction Cup

Obtain a heavy-duty suction cup used for handling large windows. Inspect and clean bottom surface if necessary.

Step 2 – Attach Suction Cup

Place the suction cup near the corner of the panel as shown in the image below.

IMPORTANT Do not place the suction cup in the middle of the panel, otherwise the panel may deform during its removal.

Step 3 – Remove Panel

WARNING

The Velcro will release quickly when pulled suddenly. Do not stand on the top step of a ladder or other support—brace yourself for the release to avoid the risk of falling.

Using a strong jerking action, pull the panel from the end wall.



1. Cover Panel Installation

Step 1 – Inspect Dual Lock (Velcro)

Inspect Dual Lock on both the panel and the end wall to ensure all pieces have good adhesion to the surfaces they are attached to.

If loose pieces are found, follow Service Bulletin VDC00269 for proper Dual Lock replacement.

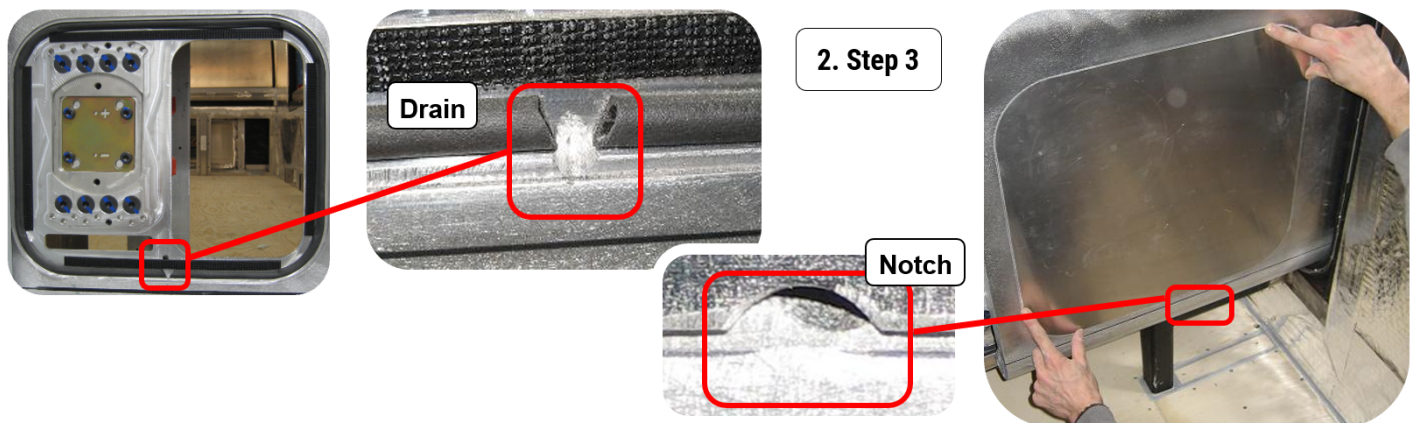
Step 2 – Inspect Seal and Mating Surfaces

- Inspect “D” Seal for nicks or cuts.
- Inspect the panel and endwall recess for foreign objects and remove as required.

Step 3 – Align Panel

1. Rotate the panel so that the notch in the bottom aligns with the notch in the end wall recess as shown below.
2. Using two opposing corners as reference, carefully align the panel into its recess. Ensure the panel does not overlap the end wall sheeting.

IMPORTANT The panel has a notch which **MUST** be aligned with the drain on the tub.



Step 4 – Install Panel

While holding the panel with one hand, use the other to firmly “pound” around the perimeter in a circular direction.

Multiple hits will likely be required to ensure all Dual Lock has been engaged. Continue until Dual Lock no longer “snaps” when the panel is struck.

IMPORTANT Do not hit the panel in the middle, otherwise the panel will be dented.

Step 5 – Check Panel

Feel around the perimeter to ensure that the panel is fully recessed, with no proud areas.

IMPORTANT It is very important to do a thorough check of the panel after installation. If this is not done, the panel may leak and cause damage to interior coach components.

